

Rab2A

Catalog Number: 21039

Gene Symbol: RAB2A

Description: Anti-Rab2A Rabbit Polyclonal Antibody

Background: Rab2 is one of the Rab family of proteins that participate in compartment specific transport events of both the endocytic and the exocytic pathways through recruitment and interaction with effectors molecules. Rab2 is highly expressed in the nervous system. Rab2 is essential for membrane trafficking in the early secretory pathway. Rab2 associates with vesicular tubular clusters located between the endoplasmic reticulum and the Golgi complex.

Immunogen: A synthetic peptide from the N-terminal region of human Rab2A

Tested Applications: ELISA, WB, IHC

Recommended Dilutions:

ELISA	1:100-1:5000
WB	1:100-1:1000
IHC	1:100-1:1000

Concentration: 0.2 mg/ml

Host: Rabbit

Clonality: Polyclonal

Purity: Purified from serum

Format: Liquid

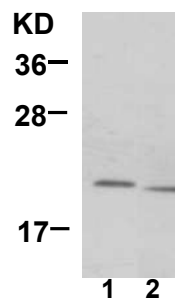
Preservative: no

Constituents: PBS (without Mg^{2+} and Ca^{2+}), pH7.4, 150 mM NaCl, 50% glycerol

Species Reactivity: Rab2A antibody recognizes Rab2A from vertebrates.

Storage Conditions: Store at $-20^{\circ}C$. Avoid freeze / thaw cycles

Western blot:



WB: anti-Rab2A pAb

HepG2 (lane 1) and HEK-293T (lane 2) cell lysates were used for Western blot with anti-Rab2A polyclonal antibody (Cat. # 21039)

FOR RESEARCH USE ONLY. NOT FOR DIAGNOSTIC APPLICATIONS